

美国岭南基金会  
陈荣捷奖学金项目  
Lingnan Foundation  
W.T. Chan Fellowships Program  
Introduction & Application Tips

*Maria Luk*  
*Institute of International Education*





# Lingnan Foundation Mission

[www.lingnanfoundation.org](http://www.lingnanfoundation.org)

**Contribute** to the advancement of higher education in the historic Lingnan region of South China, including Hong Kong and Macao.

## **Encourage**

- ❖ Academic excellence, intellectual openness and service to society
- ❖ Cooperation and scholarly exchange of information and ideas between Chinese and Americans.



# Lingnan Foundation Timeline



## 1893

Formerly the Trustees of Lingnan University, the foundation was incorporated in New York to support a college in Guangzhou, which later became Lingnan University.

## 1949

Arts & Sciences Faculty of Lingnan merged with Zhongshan University.

## 1954-1970

Trustees mainly worked in Hong Kong, with what is now CUHK and Lingnan University (HK).

## 1980s - present

Resumption of activities in Guangzhou, mainly with Sun Yat-sen (Zhongshan) University

## 1988

Creation of Lingnan (University) College within Sun Yat-sen University

## 2001

Creation of the W.T. Chan Fellowships Program



# W.T. Chan Fellowships Program Background

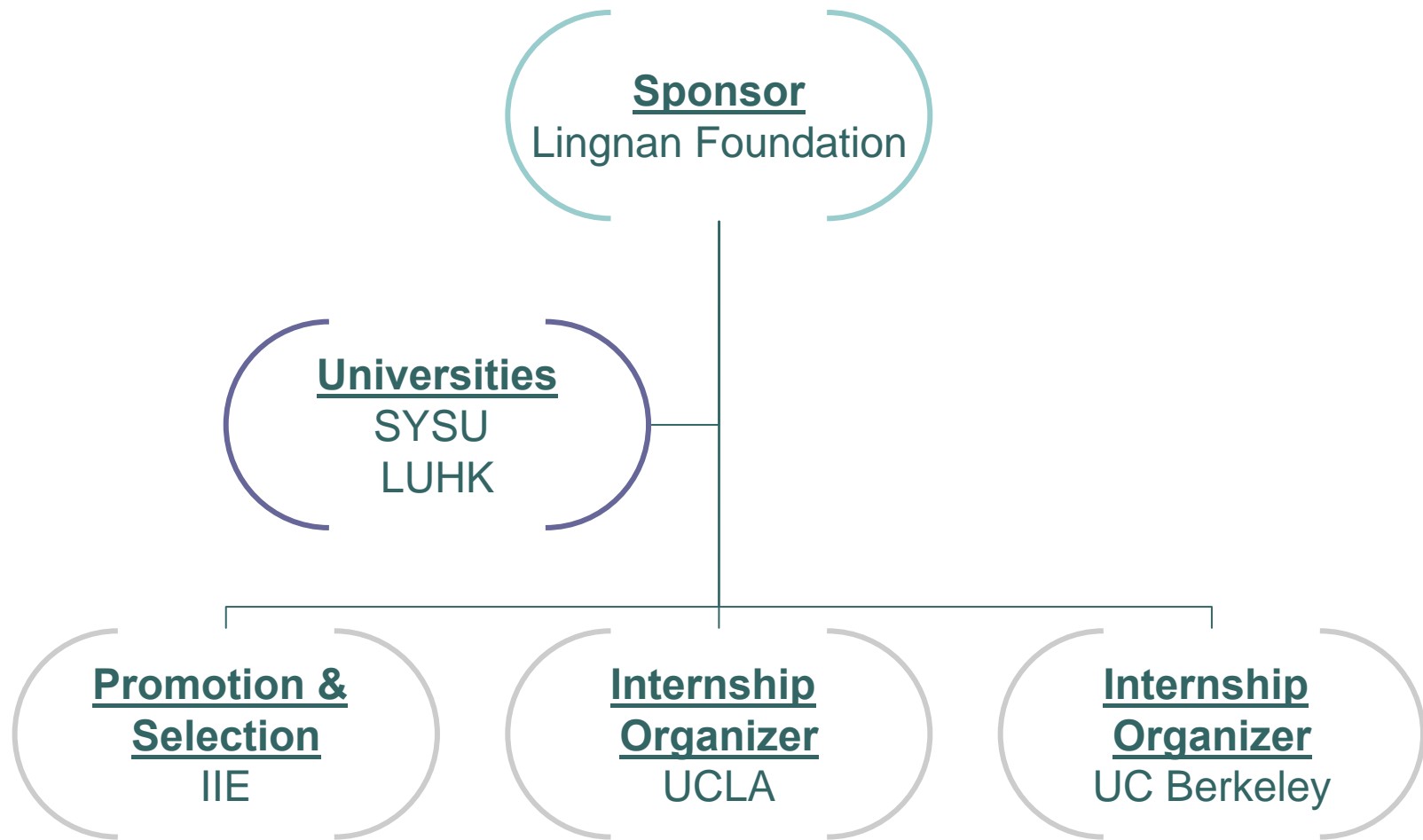
- ❖ Established in 2001 and continued on an annual basis
- ❖ The W.T. Chan Fellowships commemorate Professor W.T. Chan, former Dean of Lingnan University and distinguished Professor of Chinese Philosophy and Religion.
- ❖ The Fellowships extend the Foundation's commitment to higher education, increased international understanding, and personal growth.
- ❖ "Education for Service" Linkages between academia and communities
- ❖ Leadership, professional and personal development program through international exchange



# W.T. Chan Fellowship Program Details

- ❖ Fellows chosen from SYSU and LUHK
- ❖ Selection process organized by IIE
- ❖ 5-6 month practical internships in non-profit organizations related to his/her interest in California organized by the UCLA Dashew Center and UC Berkeley Cal Corps Public Service Center
- ❖ Academic components by UCLA/UCB
- ❖ August 2010 to January 2011 (tentative)

# W.T. Chan Fellowships Program Organization





# W.T. Chan Fellowships Program Organization

## **Institute of International Education (IIE) 国际教育协会**

- ❖ Founded in 1919
- ❖ Non-profit organization based in New York, with 19 offices worldwide (incl. Beijing and Hong Kong)
- ❖ One of the world's largest international educational exchange and training agencies
- ❖ Other programs include the Ford Foundation IFP (福特基金会国际奖学金项目), Goldman Sachs Foundation (高盛基金会) Global Leaders Program and the Fulbright Program (福布莱特计划)

[www.iie.org](http://www.iie.org) (Organization website)

[www.fundingusstudy.org](http://www.fundingusstudy.org) (Scholarship database)



# Who are the W.T. Chan Fellows?

Fellows are selected on the basis of their:

- ❖ interest in non-profit work or service
- ❖ maturity
- ❖ leadership
- ❖ flexibility
- ❖ experience
- ❖ personal initiative
- ❖ commitment



# W.T. Chan Fellowships Program Application Details

## Who can apply?

### Sun Yat-sen University

- ❖ Must be in the sciences, social sciences or humanities
- ❖ Must be a 3rd year undergraduate student or first year postgraduate student
- ❖ 4th year undergraduate students who have been accepted to a postgraduate program in Sun Yat-sen University can also apply (please send a copy of your acceptance letter with your application)

### Lingnan University (HK)

- ❖ All second or third-year undergraduate students and all postgraduate students from all majors

## 申請人資格

### 中山大學院系範圍

- ❖ 所有人文和理科學院本科三年級學生及已取我校研究生入學資格四年級學生\*，研究生一年級學生
- ❖ 本科三年級學生、研究生一年級學生
- ❖ 本科四年級學生但已獲得學校保送研究生資格（須出示獲得學校保送資格證明函）

### 嶺南大學(香港)

- ❖ 所有修讀學士學位二及三年級學生及所有修讀碩士學位學生



# W.T. Chan Fellowships Application Process

An application consists of:

- (a) a soft copy of the application form; and
- (b) hard copies of the application, supporting documents and letters of recommendation.

1. E-mail the completed application form and essays to [wtchan@iiehongkong.org](mailto:wtchan@iiehongkong.org) by the application deadline.
2. Please send the following supporting documents by mail to the Institute of International Education by the application deadline:
  - One signed copy of the application form
  - One letter of recommendation
  - Transcripts/reports of all course-work done at the college/university level.
  - One passport-sized photo in color.
  - Photocopies of award certificates and other supplementary documents are not required for the initial application.
  - 4th year students from Sun Yat-sen University must also submit proof of acceptance to a graduate program at Sun Yat-sen University.

**APPLICATION DEADLINE: January 31, 2010 (Received-by)**

# Application Form Guidelines

## Personal Details

**PERSONAL INFORMATION** **SAMPLE ONLY**

Name (English/Pinyin): Chan Dai Man  
Last/Family Name First Name

姓名 (中文): 陈 大文

University (please check ✓ one):

Lingnan University  Sun Yat-sen University\*

Final Year Undergraduate  Third Year Undergraduate

Postgraduate  Fourth Year Undergraduate

First Year Postgraduate

\*Humanities/Social Sciences Only (please see website for list of participating schools and departments)

Mailing Address: Room 42, Building 12, Lingnan University, Tuen Mun, N.T. Hong Kong  
 University

Home

Tel.: 9876-5432 E-mail: chandaiman@email.com

Date of Birth: 22/12/1989 Place of Birth: Hong Kong Sex: M  
(MM/DD/YYYY) (City, Country) (M/F)

Age (as of 31/12/09): 20 Country of Citizenship: Hong Kong



# Application Form Guidelines

## Education

### EDUCATION

List only secondary and higher education institutions, beginning with your current university first.

Dates Attended	University & Department/School Name	Location (City, Country)	Subject/Field of Study	Degree/Certificate Obtained/Expected	Year Obtained/Expected
2007-present	Lingnan University	Hong Kong	Marketing	Bachelors	2010



# Application Form Guidelines

## Work Experience

### WORK EXPERIENCE

List any previous work experience, beginning with the most recent.

Dates	Company/Organization Name	Job Title and Description
1 July – 20 August 2009	Caritas Youth Center – Tuen Mun	Music Teacher
1 July - 31 July 2008	Bank of China (Hong Kong) Limited	Internship, Communications Department



# Application Form Guidelines

## Extracurricular, Volunteer and Service Experience

### EXTRACURRICULAR, VOLUNTEER AND/OR SERVICE EXPERIENCE

List any non-academic, volunteer and/or service-related experience (during secondary school or later), beginning with the most recent first.

Dates	Organization (if any)	Description
January 2005 – August 2006	Hong Kong Dog Rescue	Volunteer <ul style="list-style-type: none"> <li>- walk and clean dogs</li> <li>- assist with fund-raising campaign</li> <li>- assist with website maintenance</li> </ul>
May 2008 - present	Oxfam	Volunteer <ul style="list-style-type: none"> <li>- work on fundraising for the charity sale of rice</li> <li>- help with marketing campaign to gather donations for the 2008 Sichuan earthquake victims and rebuild schools in Wenchuan county.</li> </ul>
March 2005 - present	YMCA Badminton Club	Member



# Application Form Guidelines

## Honors/Awards

## Travel Experience

### HONORS AND AWARDS

List any honors/awards received at secondary school and university level, beginning with the most recent.

Award Name/Description	Date Received
HSBC Scholarship for outstanding Hong Kong students. Full scholarship for one year.	2008
American Chamber of Commerce (HK) Book Club Award	2004



# Application Form Guidelines

## Travel Experience & Program Feedback

### TRAVEL EXPERIENCE

How many times have you visited the U.S. before? 1

If you have visited other countries, including the US, for holiday or academic exchange, please give details below:

Date(s) of Visit	Country Visited	Reason for Visit	Length of Visit
2005	USA, Canada	High School Exchange and Tourism/Visit Relatives	One Month

### PROGRAM FEEDBACK

How/where did you find out about this program?

*e.g. IIE website, school BBS, poster on campus, friends, professors, previous Chan Fellows.*

*Other Chan Fellows, Poster*

Do you have any comments on the application process?



# Application Form Guidelines

## Essays

### ESSAYS

Please give responses of 500 words or less to each of the following three (3) questions. Attach your essays on a separate sheet of paper to the end of your application form.

1. The participants selected to take part in the W.T. Chan Fellowships program will gain international understanding and practical work experience through community service in the U.S.A. Why have you decided to apply for this opportunity?

Please write your essay here.

2. Describe and evaluate an ongoing social issue in your local community or country today. Why does it interest you? Have you been involved? Comment on the actions that have been taken to resolve it.

Please write your essay here.

3. Describe an interesting book, news, event, film, or other work that captured your attention recently. Why did it inspire you?

Please write your essay here.



# Application Form Guidelines

## Essays - Tips

### DO:

- ❖ Research the program thoroughly before beginning your essays
  - ❖ Surf the program websites
  - ❖ Talk to former Chan Fellows
  - ❖ Read reports/essays and blogs by former Chan Fellows
  - ❖ Learn about the possible organizations in the US
  - ❖ Read up on the non-profit sector in the US and China
- ❖ Think about and write down your goals for the half-year Fellowship
- ❖ Write a list of why you want to be a Chan Fellow
- ❖ Be sincere and honest
- ❖ Write about your real passions and interests: let us learn more about you
- ❖ Clear communication and simple writing is essential
- ❖ Ask a friend to review and comment on your first draft.
- ❖ Use the spell-check function!



# Application Form Guidelines

## Essays - Tips

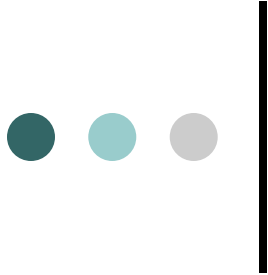
### **DON'T:**

- ❖ Forget the goals of the program and Lingnan Foundation
- ❖ List your awards/experience, etc. that are already listed in the application (don't repeat information!)
- ❖ Write the essay on the night before the deadline
- ❖ Write one sentence only saying that you want to be in the program so you can go to US and watch an NBA basketball match/do cultural exchange, etc.
- ❖ No smiley faces or heart 😊 ♥, etc. Be professional.
- ❖ Copy others' work or use long quotes from books/other sources
- ❖ Leave the essay section blank and waste the opportunity to show the selection committee that you are an individual and real person.



# Application Form Guidelines Recommendation Letter

- Ask a professor, employer or professional contact who knows you well to write a recommendation letter for you, at least 3 weeks before the deadline .
- If your recommender does not know why you want to apply for the WT Chan Fellowship Program, spend some time to explain your goals and future plans. Your recommender will be able to write a better letter to support you if they understand you and your goals.



# Application Form Guidelines Transcript, Photo & Other

## University transcript

1. English copy of transcript (成绩单) preferred
2. If sending Chinese transcript, please include a translation in English (unofficial OK)

## Passport Photo

1. At least 3 x 5cm
2. Color

## Other

**No** award certificates, publications, photographs or other documents required for the application. You may be asked to show these if invited for the final-round interview.



# Online Resources/Guides

## **APPLICATION GUIDES:**

- [www.collegeboard.com/student/apply/index.html](http://www.collegeboard.com/student/apply/index.html)
- [www.un.org/Depts/dhl/sflib/libmgnt/grantproposals.htm](http://www.un.org/Depts/dhl/sflib/libmgnt/grantproposals.htm)
- [www.evolution.unibas.ch/teaching/guarda/grantwriting.htm](http://www.evolution.unibas.ch/teaching/guarda/grantwriting.htm)
- [www.grad.berkeley.edu/acapro/pdf/grant\\_writing.pdf](http://www.grad.berkeley.edu/acapro/pdf/grant_writing.pdf)
- [www.sogc.org/about/pdf/Guide to writing a fellowship application e.pdf](http://www.sogc.org/about/pdf/Guide_to_writing_a_fellowship_application_e.pdf)

## **GET IN TOUCH WITH CHAN FELLOWS**

- <http://09chanfellow.blogbus.com/>
- <http://www.douban.com/group/61938/>



# Online Resources/Guides

## LEARN ABOUT GLOBAL ISSUES AND CIVIL SOCIETY:

- [www.un.org/chinese/millenniumgoals/](http://www.un.org/chinese/millenniumgoals/) (Chinese)
- [www.un.org/zh/civilsociety/](http://www.un.org/zh/civilsociety/) (Chinese)
- [www.ngocongo.org/index.php](http://www.ngocongo.org/index.php)
- [www.lse.ac.uk/collections/CCS/what\\_is\\_civil\\_society.htm](http://www.lse.ac.uk/collections/CCS/what_is_civil_society.htm)
- [www.idealists.org](http://www.idealists.org)
- [www2.etaown.edu/vl/ngos.html](http://www2.etaown.edu/vl/ngos.html)
- [www.ngocn.org](http://www.ngocn.org) (Chinese)
- [china.mckinseyquarterly.com/Nonprofit/Philanthropy](http://china.mckinseyquarterly.com/Nonprofit/Philanthropy)  
(Chinese)



# Application Questions?

**Karen Yu 余老师 (SYSU)**

(020) 84111897

[adsyzt@mail.sysu.edu.cn](mailto:adsyzt@mail.sysu.edu.cn)

<http://web.sysu.edu.cn/lnjjh/index.html>

**Mabel Mak (LUHK)**

(852) 2616 7021

<http://www.ln.edu.hk>

**Maria Luk (IIE)**

(852) 2103 1505

[wtchan@iiehongkong.org](mailto:wtchan@iiehongkong.org)

<http://www.iiehongkong.org/wtchan/>